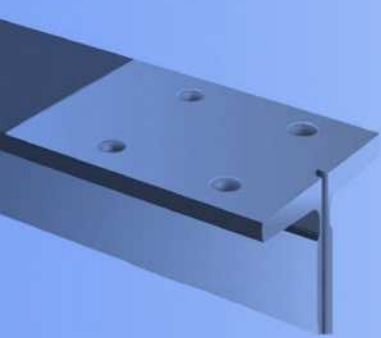
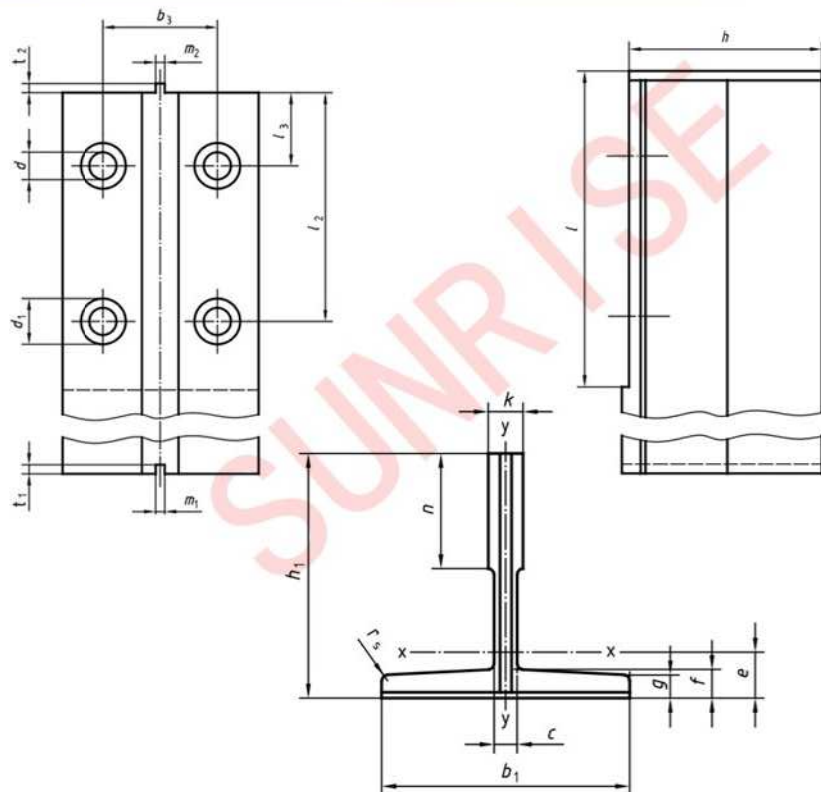


Standard Machined Guide Rails / 标准机加工导轨



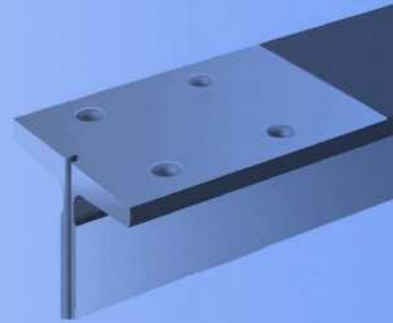
Dimensions and Tolerances of Guide Rails / 导轨的尺寸和公差

Profile	Item	h1 [mm]	h [mm]	k [mm]	n [mm]	m1 [mm]	m2 [mm]	t1 [mm]	t2 [mm]	l [mm]	d [mm]	d1 [mm]	b3 [mm]	l2 [mm]	l3 [mm]
T70-1/B	Tolerance	±0.1	±0.1	+0.1 0	+3 0	+0.06 0	0 -0.06	±0.1	±0.1	+3 0			±0.2	±0.2	±0.2
	Dimension	65	64	9	34	3	2.95	3.5	3	128	13	26	42	105	25
T75-3/B	Tolerance	±0.75	±0.1	+0.1 0	+3 0	+0.06 0	0 -0.06	±0.1	±0.1	+3 0			±0.2	±0.2	±0.2
	Dimension	62	61	10	30	3	2.95	3.5	3	123	13	26	43	90	30
T78/B	Tolerance	±0.75	±0.1	+0.1 0	+3 0	+0.06 0	0 -0.06	±0.1	±0.1	+3 0			±0.2	±0.2	±0.2
	Dimension	56	55	10	26	3	3	3.5	3	160	14	28	50	114	38
T82/B	Tolerance	±0.75	±0.1	+0.1 0	+3 0	+0.06 0	+0.06 0	±0.1	±0.1	+3 0			±0.2	±0.2	±0.2
	Dimension	68.25	66.6	9	25.4	3	2.95	3.5	3	111	13	26	50.8	81	27
T89/B	Tolerance	±0.75	±0.1	+0.1 0	+3 0	+0.06 0	0 -0.06	±0.1	±0.1	+3 0			±0.2	±0.2	±0.2
	Dimension	62	61	15.88	33.4	6.4	6.37	7.14	6.35	156	13	26	57.2	114.3	38.1
T90/B	Tolerance	±0.75	±0.1	+0.1 0	+3 0	+0.06 0	0 -0.06	±0.1	±0.1	+3 0			±0.2	±0.2	±0.2
	Dimension	75	74	16	42	6.4	6.37	7.14	6.35	156	13	26	57.2	114.3	38.1
T114/B	Tolerance	±0.75	±0.1	±0.05	+3 0	+0.06 0	0 -0.06	±0.1	±0.1	+3 0			±0.2	±0.2	±0.2
	Dimension	89	88	16	38	6.4	6.37	7.14	6.35	156	17	33	71	114	38
T125/B	Tolerance	±0.75	±0.1	±0.05	+3 0	+0.06 0	0 -0.06	±0.1	±0.1	+3 0			±0.2	±0.2	±0.2
	Dimension	82	81	10	42	6.4	6.37	7.14	6.35	156	17	33	79.4	114.3	38.1
T127-1/B	Tolerance	±0.75	±0.1	+0.1 0	+3 0	+0.06 0	0 -0.06	±0.1	±0.1	+3 0			±0.2	±0.2	±0.2
	Dimension	89	88	15.88	44.5	6.4	6.37	7.14	6.35	156	17	33	79.4	114.3	38.1
T127-2/B	Tolerance	±0.75	±0.1	+0.1 0	+3 0	+0.06 0	0 -0.06	±0.1	±0.1	+3 0			±0.2	±0.2	±0.2
	Dimension	89	88	15.88	50.8	6.4	6.37	7.14	6.35	156	17	33	79.4	114.3	38.1
T140-1/B	Tolerance	±0.75	±0.1	+0.1 0	+3 0	+0.06 0	0 -0.06	±0.1	±0.1	+3 0			±0.2	±0.2	±0.2
	Dimension	108	107	19	50.8	6.4	6.37	7.14	6.35	193	21	40	92.1	152.4	31.8
T140-2/B	Tolerance	±0.75	±0.1	+0.1 1	+3 1	+0.06 1	1 -0.06	±0.1	±0.1	+3 1			±0.2	±0.2	±0.2
	Dimension	102	101	28.6	50.8	6.4	6.37	7.14	6.35	193	21	40	92.1	152.4	31.8
T140-3/B	Tolerance	±0.75	±0.1	+0.1 2	+3 2	+0.06 2	2 -0.06	±0.1	±0.1	+3 2			±0.2	±0.2	±0.2
	Dimension	127	126	31.75	50.8	6.4	6.37	7.14	6.35	193	21	40	92.1	152.4	31.8



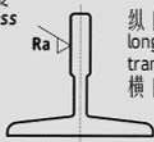
Technical Characteristics for Machined Guide Rails / 机加工导轨技术参数

Designation	S cm ²	q ₁ kg/m	e cm	I _{xx} cm ⁴	W _{xx} cm ³	i _{xx} cm	I _{yy} cm ⁴	W _{yy} cm ³	i _{yy} cm
T70-1/B	9,51	7,47	2,04	41,3	9,24	2,09	18,65	5,35	1,4
T75-3/B	10,99	8,63	1,86	40,35	9,29	1,92	26,49	7,06	1,55
T78/B	9,84	7,72	1,65	29,9	7,56	1,47	26,1	6,71	1,63
T82/B	10,90	8,55	1,98	49,60	10,30	2,13	30,7	7,4	1,67
T89/B	15,7	12,3	2,02	59,52	14,25	1,95	52,4	11,8	1,83
T90/B	17,3	13,55	2,61	102	20,87	2,43	53	11,8	1,75
T114/B	20,8	16,31	2,87	179	29,7	2,93	108	19,1	2,28
T125/B	22,83	17,9	2,43	151,0	26,2	2,57	159	25,4	2,64
T127-1/B	22,64	17,77	2,75	186,2	30,4	2,87	148	23,4	2,56
T127-2/B	28,63	22,48	2,47	198,4	30,9	2,63	230	36,2	2,83
T140-1/B	35,5	27,9	3,23	404	53,4	3,37	310	44,3	2,95
T140-2/B	43,44	34,1	3,47	457	68	3,24	358	51,2	2,87
T140-3/B	58,57	46	4,38	953	114,6	4,03	486	69,4	2,88



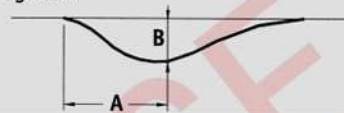
Other Key Control Parameters / 其它关键控制参数

导向面光洁度
Blade roughness



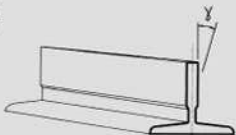
纵向 longitudinal $R_s \leq 1,6\mu$
transversal $1,6 \leq R_s \leq 3,2\mu$
横向

直线度
Straightness



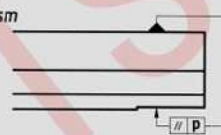
$B/A = 0.001$
 $B_{max}(5m) = 1.5 mm$
 $B_z = 0.3 mm$

扭曲度
Twisting



$\gamma = 30' / m$

平行度
Parallelism



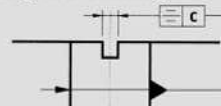
$p = 0.1 mm$

垂直度
Perpendicularity



$\alpha = 5'$
 $\beta = 15'$

对称度
Tongue and groove centering



$C = 0.1 mm$