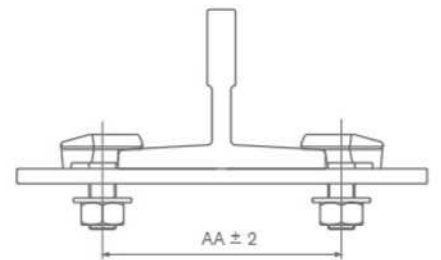
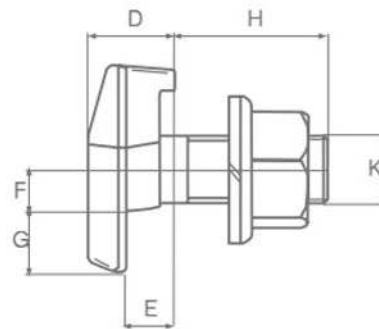
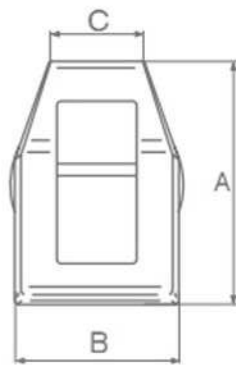


Clips / 夹板



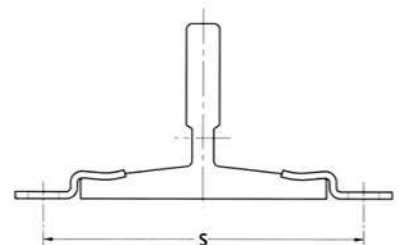
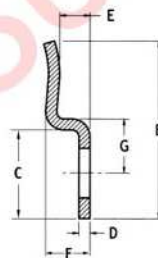
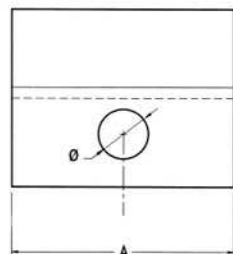
Forged Clips-Type H/H 型锻造夹板

Sunrise Code	Applicable Rail Size	Φ mm	A mm	B mm	C mm	D mm	E mm	F mm	G mm	H mm
Tolerances			±1.3	±1.3		±1	±1	±0.5	±1	±1.3
H1	T45	M10	32	22	15	12	5.5	5	11	23
	T50									
H2	T70	M12	39	26	16	15	7.3	6.5	13	27
	T75									
	T82									
H3	T78	M14	45	29	16	18.5	9.5	8	13	34
	T89									
	T90									
H4	T114	M16	50	34	16	20.5	10.5	8.5	15	40
	T125									
	T127-1									
	T127-2									
H5	T140-1	M18	55	37	18	23	13	11	17	42
	T140-2									

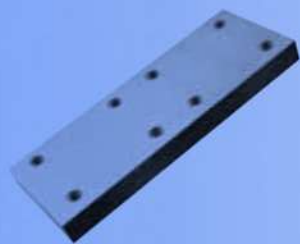


Sliding Clips-Type S/S 型滑动夹板

Sunrise Code	Applicable Rail Size	Φ mm	A mm	B mm	C mm	D mm	E mm	F mm	G mm	Bolt Size
Tolerances			±0.5	±0.5	±0.5	±0.5	±0.1	±0.5	±0.5	±0.5
S1	T89	15	76	70	31	5	9	14.5	18.5	M12x35
	T90									
	T114									
	T125									
S2	T127-1	17.5	76	70	33	5	14.5	20.5	19	M16x50
	T127-2									

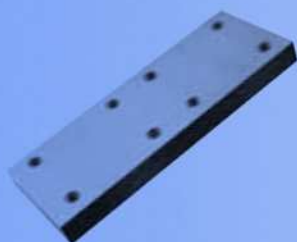


Fishplate / 连接板



Standard Fishplates/标准连接板

Sunrise Code	d	b ₂	b ₃	l ₁	l ₂	l ₃	v	W _{xx}	W _{yy}	Weight	Bolt Size
Tolerances/公差		±1.5	±0.2	±1.5	±0.2	±0.2	0/+2				
T45/A	9	50	25	160	65	15	8	0.53	3.33	0.50	M 8X25
T50/A	9	50	30	200	75	25	8	0.53	3.33	0.60	M 8X25
T70-1/B	13	70	42	250	105	25	10	1.17	8.17	1.29	M 12X35
T75-3/B	13	75	43	240	90	30	10	1.25	9.38	1.33	M 12X35
T78/B	13	75	43	240	90	30	10	1.25	9.38	1.33	M 12X35
T82/B	13	80	50.8	216	81	27	10	1.33	10.67	1.27	M 12X35
T89/B	13	90	57.2	305	114.3	38.1	13	2.54	17.55	2.70	M 12X35
T90/B	13	90	57.2	305	114.3	38.1	13	2.54	17.55	2.70	M 12X35
T114/B	17	130	79.4	305	114.3	38.1	17	6.26	47.88	5.00	M 16X50
T125/B	17	130	79.4	305	114.3	38.1	17	6.26	47.88	5.00	M 16X50
T127-1/B	17	130	79.4	305	114.3	38.1	17	6.26	47.88	5.00	M 16X50
T127-2/B	17	130	79.4	305	114.3	38.1	17	6.26	47.88	5.00	M 16X50
T140-1/B	21	140	92.1	380	152.4	31.8	25	14.58	81.67	11.00	M 20X65
T140-2/B	21	140	92.1	380	152.4	31.8	25	14.58	81.67	11.00	M 20X65
T140-3/B	21	140	92.1	380	152.4	31.8	30	21.00	98.00	13.20	M 20X80



Special Thickness Fishplates / 特殊厚度连接板

Sunrise Code	d	b ₂	b ₃	l ₁	l ₂	l ₃	v	W _{xx}	W _{yy}	Weight	Bolt Size
Tolerances/公差		±1.5	±0.2	±1.5	±0.2	±0.2	0/+2				
T75-3/B	13	75	43	240	90	30	12	1.80	11.25	1.60	M 12X35
T78/B	13	75	43	240	90	30	12	1.80	11.25	1.60	M 12X35
T82/B	13	80	50.8	216	81	27	20	5.33	21.33	2.55	M 12X45
T89/B	13	90	57.2	305	114.3	38.1	20	6.00	27.00	4.14	M 12X45
T90/B							30	13.50	40.50	6.21	M 12X55
T114/B	17	130	79.4	305	114.3	38.1	30	19.50	84.50	8.91	M 16X60
T125/B							35	26.54	98.58	10.40	M 16X65
T127-1/B							40	34.67	112.67	11.88	M 16X70
T127-2/B							50	54.17	140.83	14.85	M 16X80
T140-1/B	21	140	92.1	380	152.4	31.8	40	37.33	130.67	15.84	M 20X85
T140-2/B							50	58.33	163.33	19.79	M 20X95
T140-3/B							75	131.25	245.00	29.69	M 20X120

